



Stuartholme Masterplan 2020



A.

A.1 SITE MASTERPLAN - OVERALL

Part A of the Masterplan identifies a number of site wide developments and projects to be considered over the short to medium term.

Part B of the Masterplan identifies new building and refurbishment work to existing facilities and adjacent areas.



A Freers Sporting Precinct Redevelopment

The Freers Site currently houses the School gymnasium, overflow storage items from the main campus and the storage and maintenance workshop for the Stuartholme rowing boats and other schools. Proposals have been put forward for the development and better utilisation of the site that include:

- A1 - New Sporting Fields for touch football and hockey fields
- A2 - Four new net ball courts
- A3 - Refurbish existing Freers Building
- A4 - Cricket nets

B Access to Freers Site

Investigate pedestrian access options from main campus to Freers Site.

- B1 - Option 1 Access Path

B1 Access Path

To provide a direct connection to Freers an access path that starts at the T-junction of the access road and winds through the contours of the bush finishing at the open space of the Freers site. A feasibility assessment is required for this stage, and is expected to provide the potential for:

- Quick and direct access to Freers site and facilities
- Inclusion in cross country and fitness training
- Creek culvert bridge crossing
- Connecting concrete path
- All contained within campus boundary



A.

A.2 SITE MASTERPLAN - MAIN CAMPUS

(C) Joigny Extension

Three level extension to Joigny. The extension includes the following functions:

- Additional Art Spaces
- Extension to the Library
- Breakout Court to the Performing Arts Centre

(D) Multipurpose Sports and Innovation Centre

Four level facility housing the following functions and activities:

Level 1

- Design Lounge
- Innovation Forum
- Maker Spaces
- Breakout Spaces
- Store / Print
- Art Extension

Level 2

- 6 x Learning Spaces
- Library
- Staff Room

Level 3

- 2 x Multipurpose Indoor Courts
- Change rooms & Amenities
- Breakout Space
- Storage
- Cafeteria

Level 4

- Kitchenette
- Staff Rooms
- 1 x Learning Space
- Storage

(E) Upper Primary School

Two storey building to accommodate years 5-6.

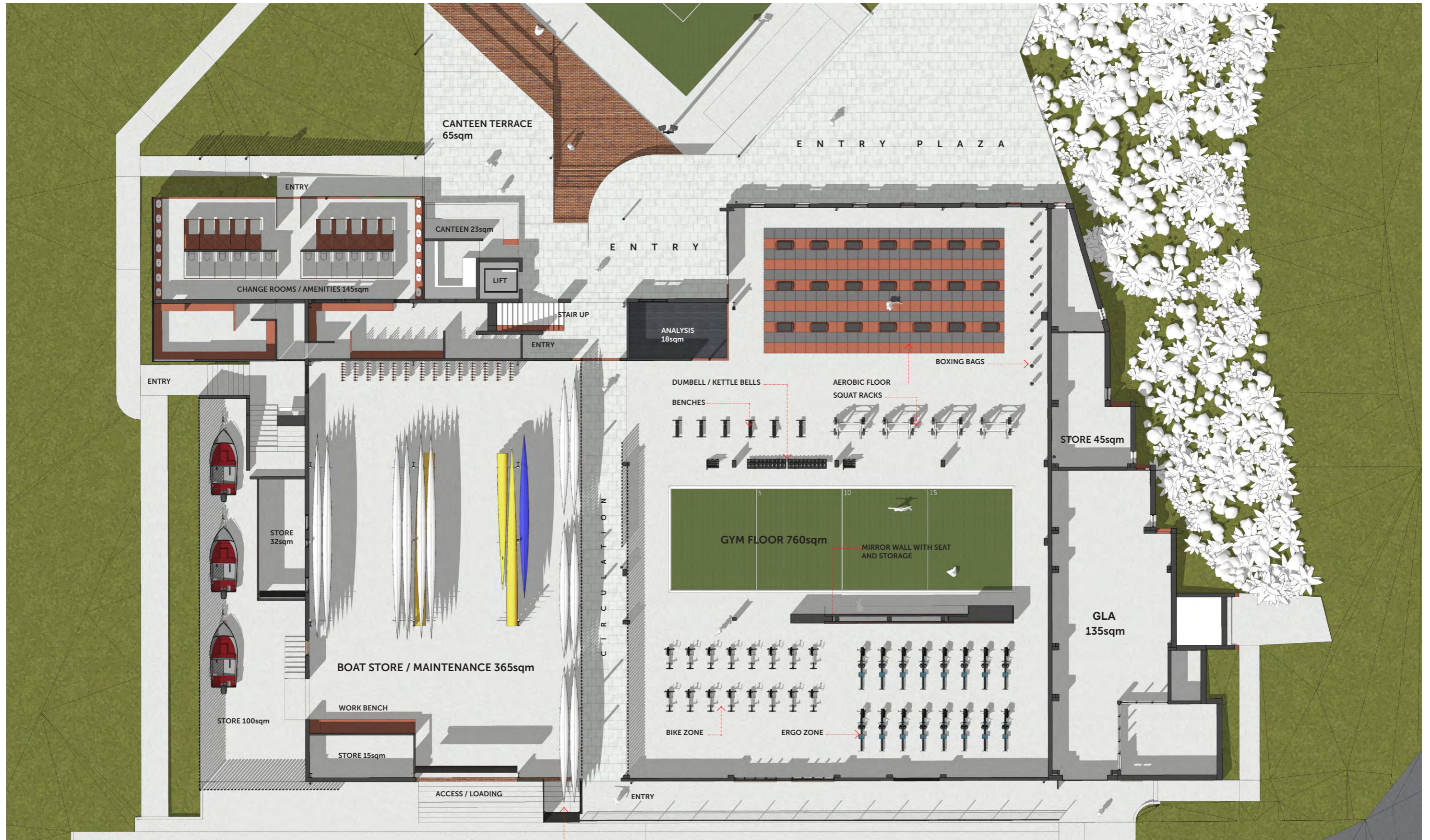
- General learning areas
- Administration
- Staff support facilities
- Storage and amenities

(F) Additional Car Parking

Convert existing hard court into additional parking for staff. The conversion of the hard court to parking will allow an additional 22 cars.

- (Grey circle) Existing Buildings
- (Blue circle) New Buildings
- (Green circle) New Sports Facilities
- (A) Freers Sporting Precinct
Redevelopment
- (B1) Access Path
- (C) Joigny Extension
- (D) Multipurpose Sports
and Innovation Centre
- (E) Upper Primary School
- (F) Additional Car Parking
- (1) Existing Swimming Complex
- (2) Existing Joigny Building
- (3) Existing Spruson Building
- (4) Existing Renard Building
- (5) Existing Chapel
- (6) Existing Freers Shed
- (7) Existing Entry Points
- (8) Existing Principal Residence
- (9) Existing Residences



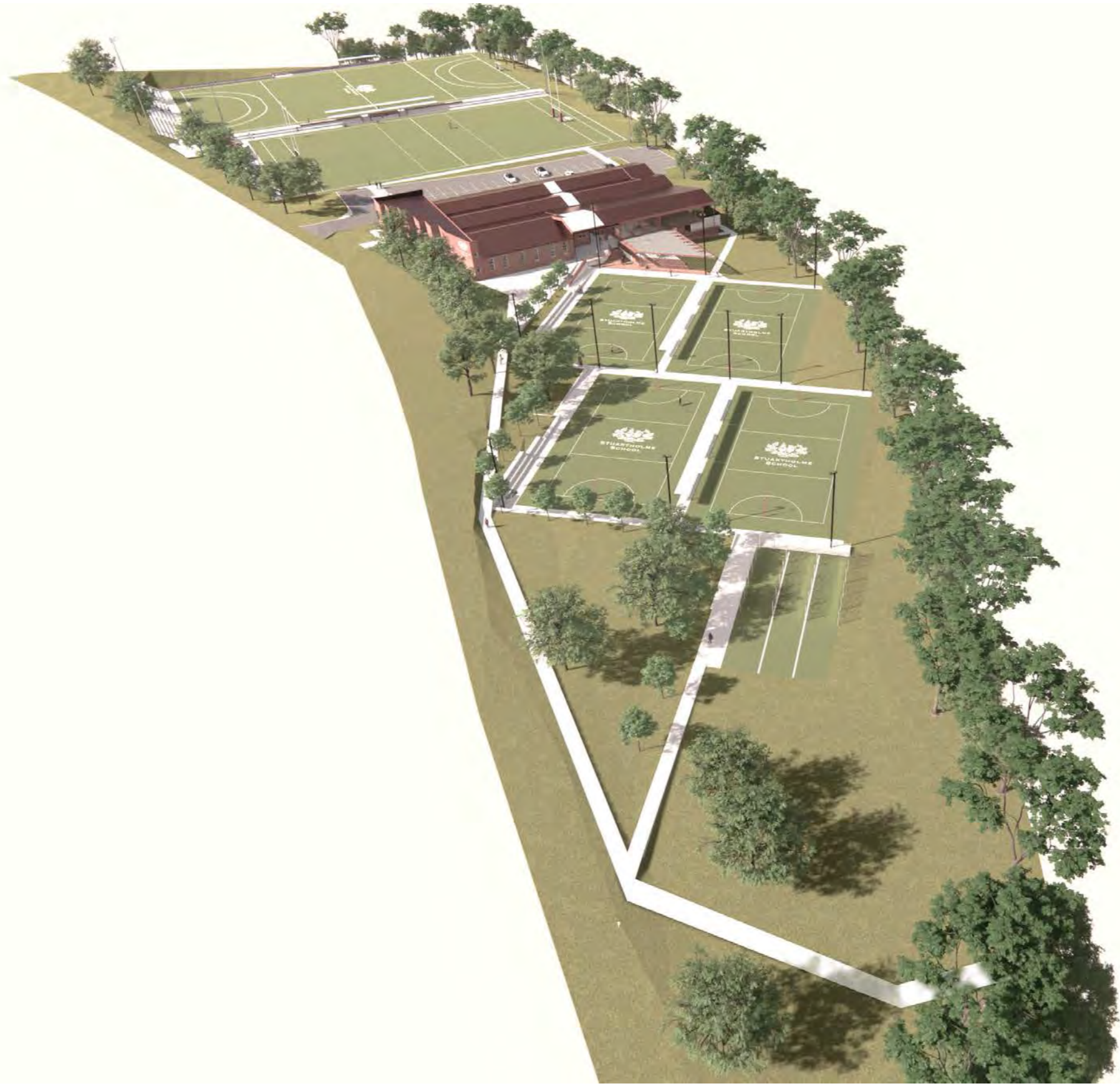


GLASS WINDOW BOX TO ROWING STORE

ACCESS TO FIELDS

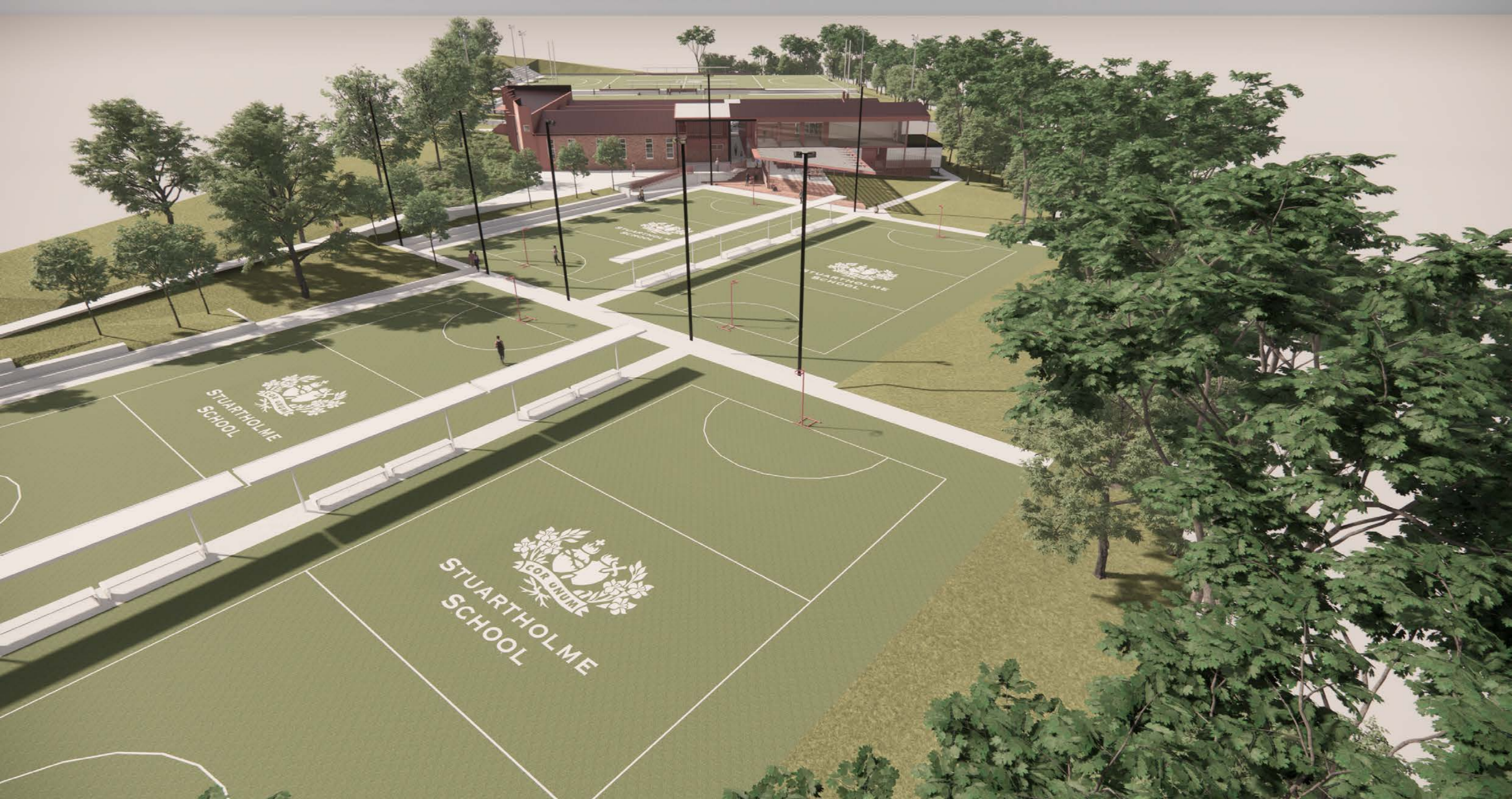
C.

C.4 AERIAL VIEW 1



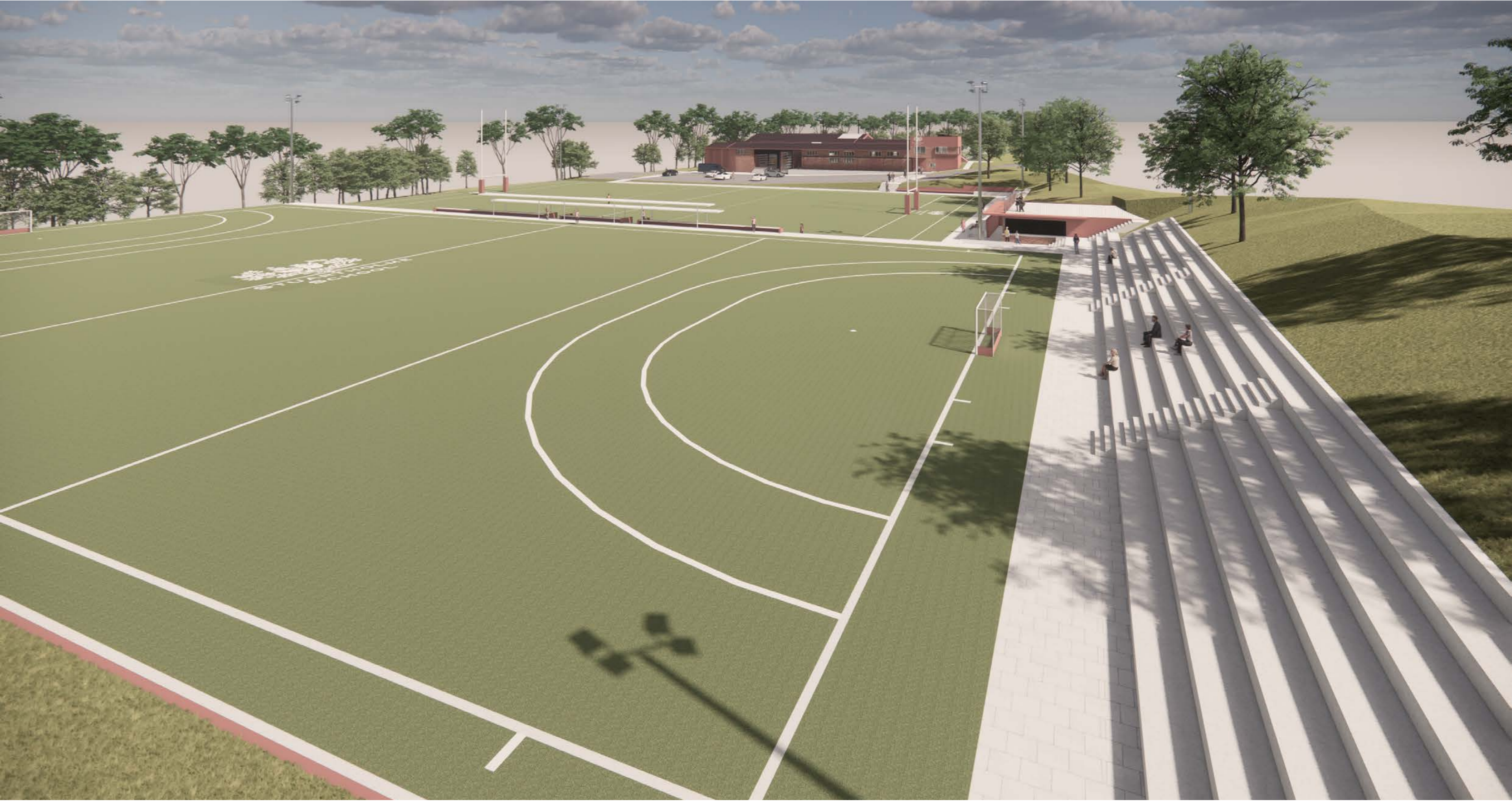
C.

C.5 AERIAL VIEW 2



C.

C.6 AERIAL VIEW 3



C.

C.7 AERIAL VIEW 4



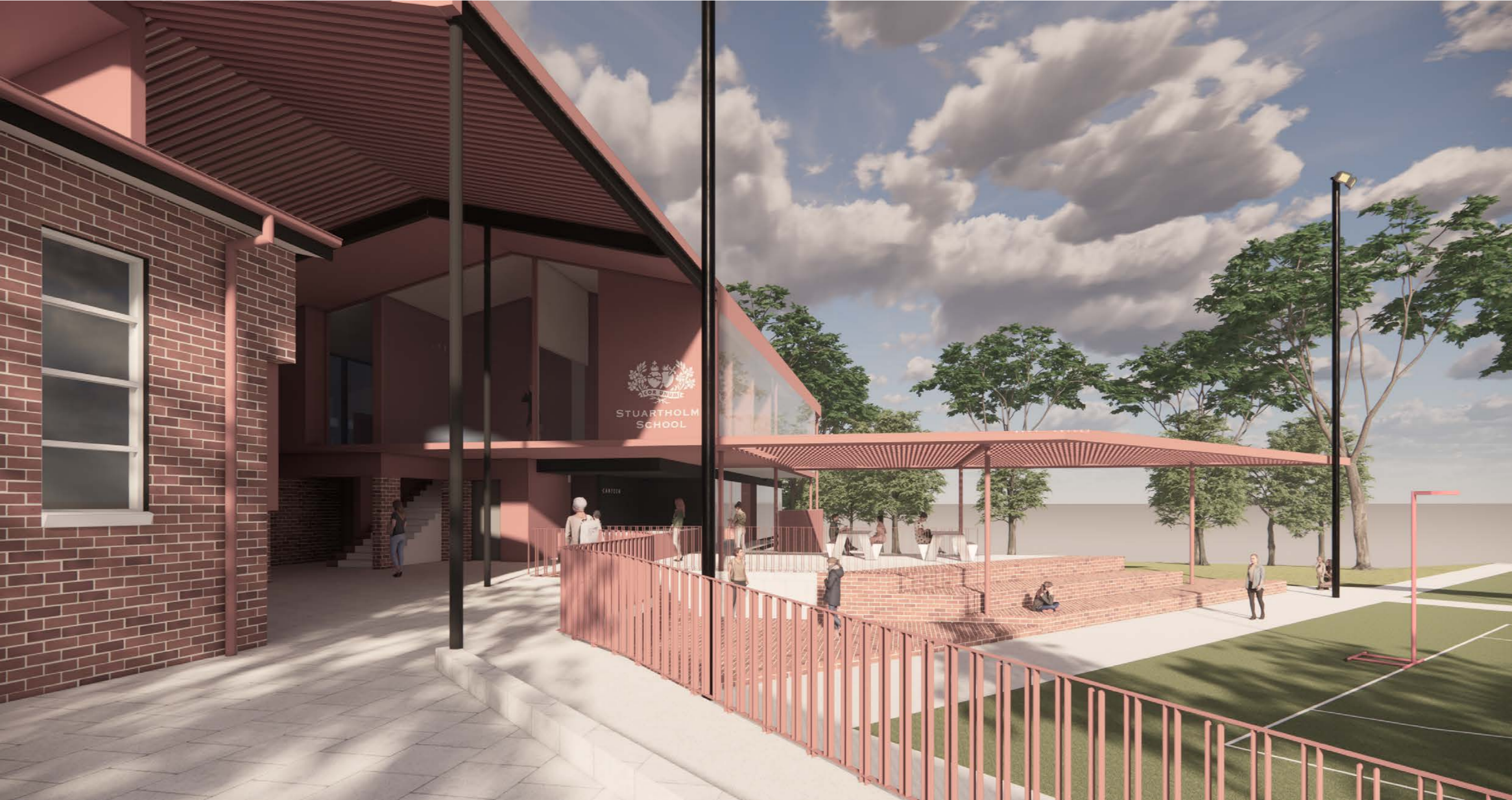
C.

C.8 PERSPECTIVE VIEW 1

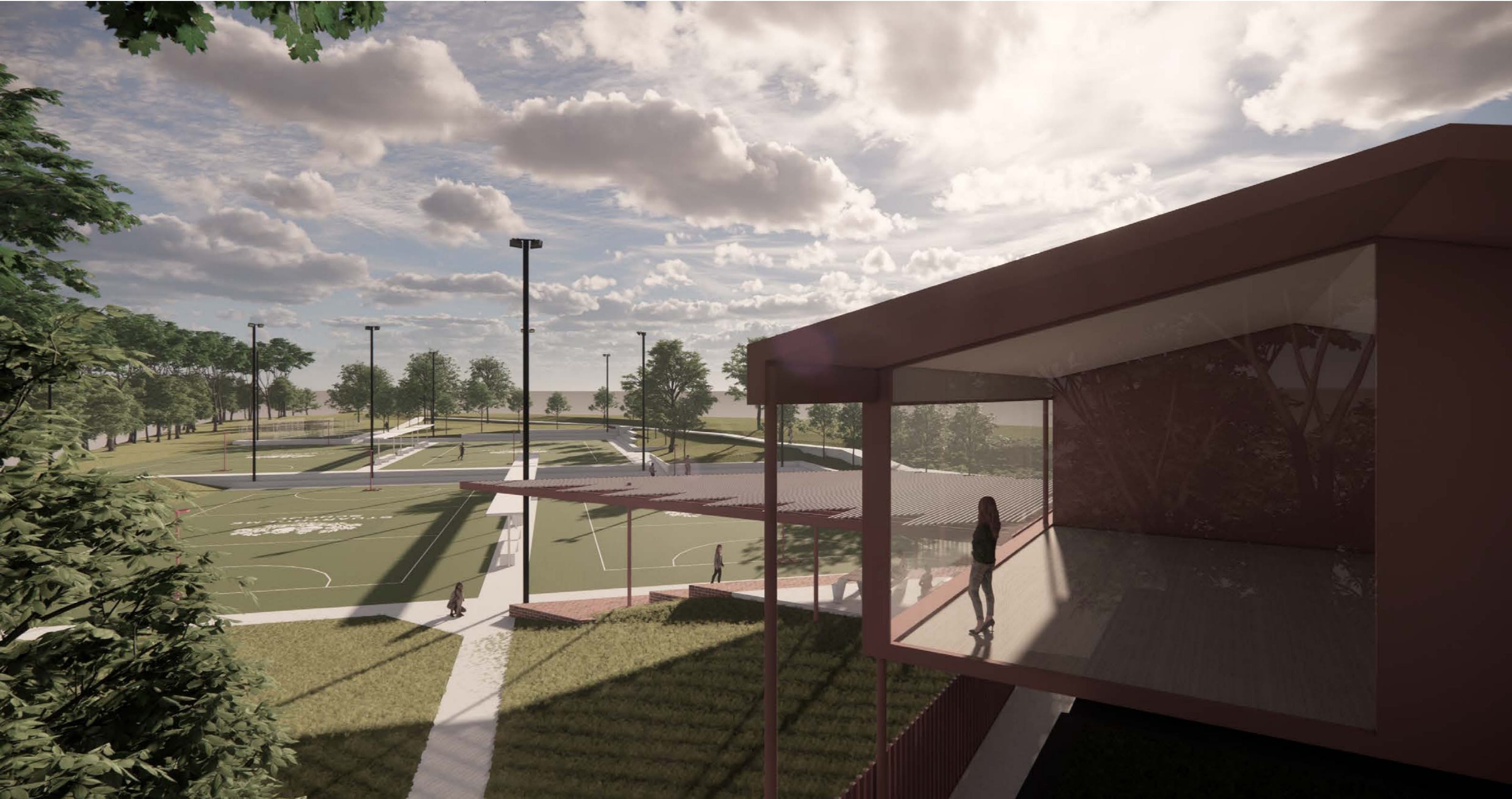


C.

C.9 PERSPECTIVE VIEW 2







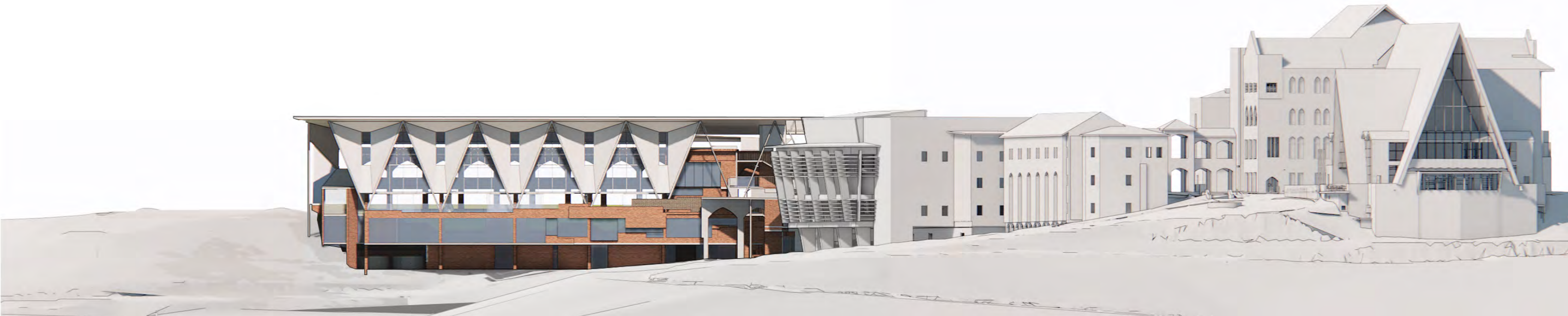
C.

C.12 PERSPECTIVE VIEW 5

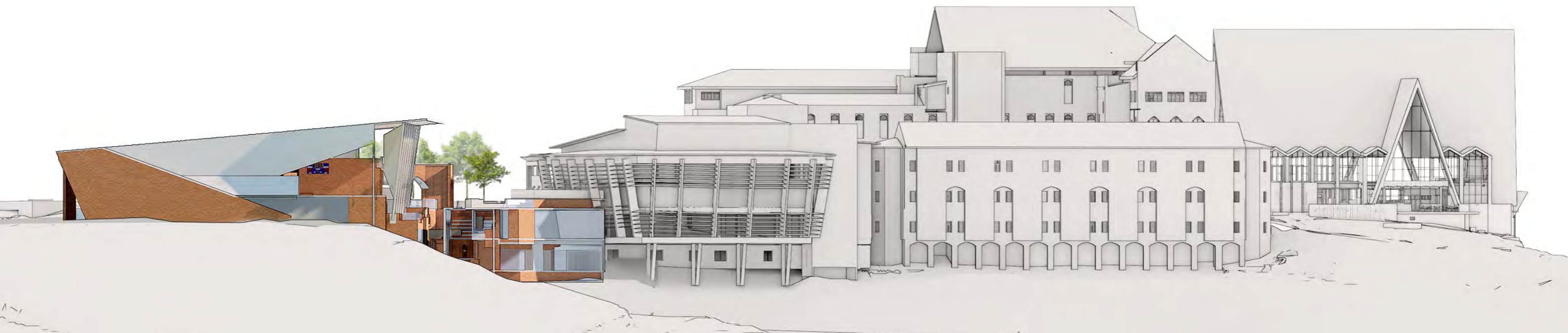


D.

D.5 PROPOSED ELEVATIONS



South Elevation



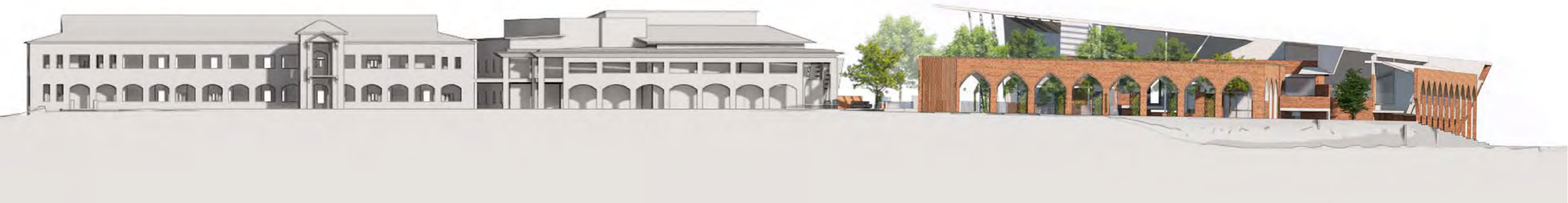
West Elevation

D.

D.6 PROPOSED ELEVATIONS



North Elevation



East Elevation

D.

D.7 SECTION VIEW

